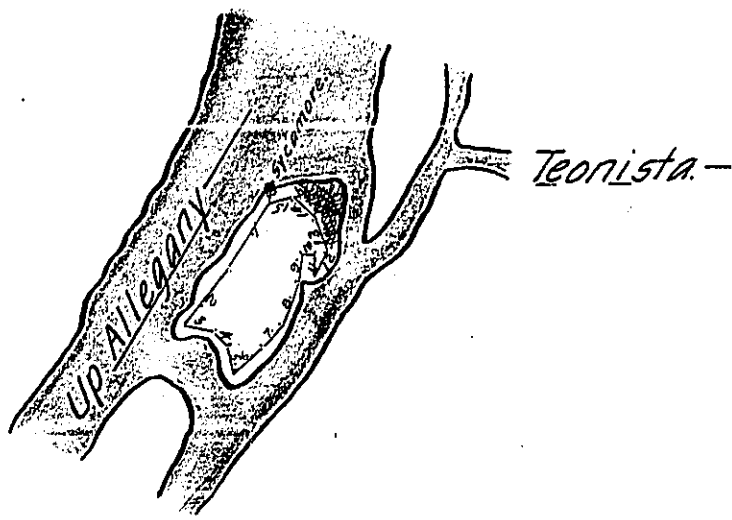


Courses and Distances Beginning at a Sycamore near the upper end, Thence

- N^o. 1. 5 3 3 W 3 3.
- 2. 5 3 8 W 3 1
- 3. 5 8 0 E 1 5
- 4. 5 4 2 E - 8
- 5. 5 1 5 E 1 1
- 6. N 5 6 E 1 4
- 7. N 3 8 E 1 6
- 8. N 2 1 E 1 9
- 9. N 1 3 E 1 3
- 10. 5 7 6 E - 4
- 11. 5 - 1 E - 9
- 12. N 3 0 E 1 2
- 13. N 2 3 W 1 6
- 14. N 4 7 W 1 3
- 15. 5 6 9 W 1 2 to the Beginning containing 12^{ac} 103^{rs} &c.



The Draft of an Island in the Allegany river in Venango County, Surveyed 26th November 1813 in pursuance of a Warrant granted to Poland Hunter Dated the 11th day of October 1813.

A. Mc Calmont, D.S.

Andrew Porter, Esq^r.
 Surveyor General.

IN TESTIMONY that the above is a copy of the original remaining on file in the Department of Internal Affairs of Pennsylvania, made conformably to an Act of Assembly approved the 16th day of February, 1833, I have hereunto set my Hand and caused the Seal of said Department to be affixed at Harrisburg, this fourteenth day of April 1905.

Isaac D. [Signature]
 Secretary of Internal Affairs.